

REV	LOCATIONS	DESCRIPTION	DATE	REVISER	APPD

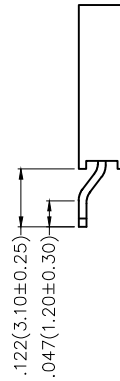
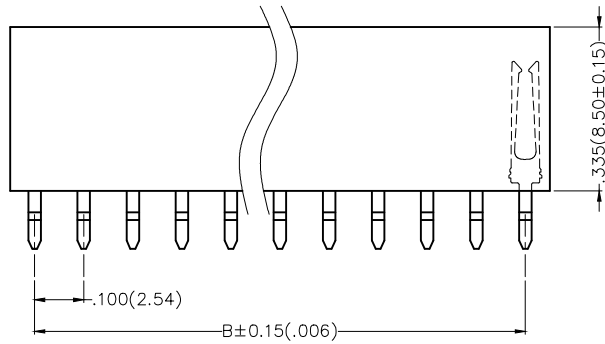
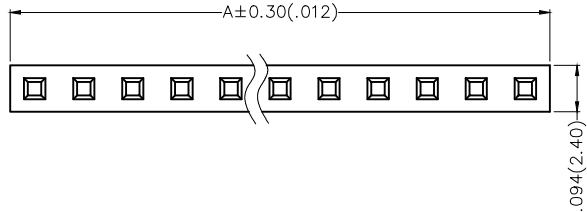
SPECIFICATIONS

Electrical

Current Rating: 3A AC(rms)/DC
 Voltage Rating: 250V AC(rms)/DC
 Contact Resistance: 20 mΩ Max
 Insulation Resistance: 1000 MΩ MIN
 Withstanding Voltage: 500V AC r.m.s
 Temperature Range-Operating: -40°C~+105°C

Material and Plating

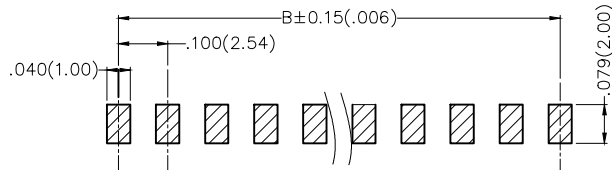
Housing: PA6T (UL 94V-0) Black
 Pin: Brass /Gold plated




Ordering Information

FFH 254 44 - S XX B X XX 4 K6 X
 1 2 3 4 5 6 7 8 9 10 11

1 Category FFH-Female Header	2 Series Number 254-Pitch2.54mm	3 Distinction No. 44	4 Row Option S-Single row	5 Circuits XX	6 Entry Angle B-90° Angle
7 Plating 1-Gold plated 3-Selective gold on contact area, tin on tail	8 Thickness of Plating 00-Gold flash 03-3μ"	9 Material-Resin 4-PA6T	10 Color-Resin K6-Black	11 Packaging K-Tray M-Reel	

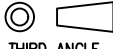



Recommended P.C.Board Layout

THIRD ANGLE PROJECTION	GENERAL TOLERANCES (UNLESS SPECIFIED)		APPROVE BY FRANK	DATE 18/AUG/16	PART NO. FFH25444-SXXBXXX4K6X	ITEM NO. FFH25444	 Leader Of Industry
	DESIGN UNITS Inch (metric)	X.±.012(0.30) X.X±.008(0.20) X.XX±.006(0.15) X.XXX±.004(0.10)	X.*±5° .X*±2° .XX*±1° .XXX*±0.5°	CHECKED BY CHERRY	DATE 18/AUG/16	TITLE Board to Board (Female Header) Pitch 2.54mm 90° Angle (SMT)	
SCALE 5:1	SIZE A4	DRAWN BY VERNON		DATE 18/AUG/16	THIS DRAWING CONTAINS INFORMATION THAT IS PROPRIETARY TO TXGA INDUSTRIAL ELECTRONICS(S.Z)CO.,LTD AND SHOULD NOT BE USED WITHOUT WRITTEN PERMISSION		

REV	LOCATIONS	DESCRIPTION	DATE	REVISER	APPD

Circuits (n)	Part No.	Dimensions(in/mm)		Circuits (n)	Part No.	Dimensions(in/mm)	
		A	B			A	B
2	FFH25444-S02BXXX4K6X	.216(5.48)	.100(2.54)	22	FFH25444-S22BXXX4K6X	2.216(56.28)	2.100(53.34)
3	FFH25444-S03BXXX4K6X	.316(8.02)	.200(5.08)	23	FFH25444-S23BXXX4K6X	2.316(58.82)	2.200(55.88)
4	FFH25444-S04BXXX4K6X	.416(10.56)	.300(7.62)	24	FFH25444-S24BXXX4K6X	2.416(61.36)	2.300(58.42)
5	FFH25444-S05BXXX4K6X	.516(13.10)	.400(10.16)	25	FFH25444-S25BXXX4K6X	2.516(63.90)	2.400(60.96)
6	FFH25444-S06BXXX4K6X	.616(15.64)	.500(12.70)	26	FFH25444-S26BXXX4K6X	2.616(66.44)	2.500(63.50)
7	FFH25444-S07BXXX4K6X	.716(18.18)	.600(15.24)	27	FFH25444-S27BXXX4K6X	2.716(68.98)	2.600(66.04)
8	FFH25444-S08BXXX4K6X	.816(20.72)	.700(17.78)	28	FFH25444-S28BXXX4K6X	2.816(71.52)	2.700(68.58)
9	FFH25444-S09BXXX4K6X	.916(23.26)	.800(20.32)	29	FFH25444-S29BXXX4K6X	2.916(74.06)	2.800(71.12)
10	FFH25444-S10BXXX4K6X	1.016(25.80)	.900(22.86)	30	FFH25444-S30BXXX4K6X	3.016(76.60)	2.900(73.66)
11	FFH25444-S11BXXX4K6X	1.116(28.34)	1.000(25.40)	31	FFH25444-S31BXXX4K6X	3.116(79.14)	3.000(76.20)
12	FFH25444-S12BXXX4K6X	1.216(30.88)	1.100(27.94)	32	FFH25444-S32BXXX4K6X	3.216(81.68)	3.100(78.74)
13	FFH25444-S13BXXX4K6X	1.316(33.42)	1.200(30.48)	33	FFH25444-S33BXXX4K6X	3.316(84.22)	3.200(81.28)
14	FFH25444-S14BXXX4K6X	1.416(35.96)	1.300(33.02)	34	FFH25444-S34BXXX4K6X	3.416(86.76)	3.300(83.82)
15	FFH25444-S15BXXX4K6X	1.516(38.50)	1.400(35.56)	35	FFH25444-S35BXXX4K6X	3.516(89.30)	3.400(86.36)
16	FFH25444-S16BXXX4K6X	1.616(41.04)	1.500(38.10)	36	FFH25444-S36BXXX4K6X	3.616(91.84)	3.500(88.90)
17	FFH25444-S17BXXX4K6X	1.716(43.58)	1.600(40.64)	37	FFH25444-S37BXXX4K6X	3.716(94.38)	3.600(91.44)
18	FFH25444-S18BXXX4K6X	1.816(46.12)	1.700(43.18)	38	FFH25444-S38BXXX4K6X	3.816(96.92)	3.700(93.98)
19	FFH25444-S19BXXX4K6X	1.916(48.66)	1.800(45.72)	39	FFH25444-S39BXXX4K6X	3.916(99.46)	3.800(96.52)
20	FFH25444-S20BXXX4K6X	2.016(51.20)	1.900(48.26)	40	FFH25444-S40BXXX4K6X	4.016(102.00)	3.900(99.06)
21	FFH25444-S21BXXX4K6X	2.116(53.74)	2.000(50.80)				

 THIRD ANGLE PROJECTION	GENERAL TOLERANCES (UNLESS SPECIFIED)		APPROVE BY FRANK	DATE 18/AUG/16	PART NO. FFH25444-SXXBXXX4K6X	ITEM NO. FFH25444	 Leader Of Industry	
	DESIGN UNITS Inch (metric)	X.±.012(0.30)	X.±5'	CHECKED BY CHERRY	DATE 18/AUG/16	TITLE Board to Board (Female Header) Pitch 2.54mm 90° Angle (SMT)		
		X.XX±.008(0.20)	.X'±2'	DRAWN BY VERNON	DATE 18/AUG/16	REV 0		SHEET NO. 2/2
		SCALE 5:1	SIZE A4	X.XX±.006(0.15)	.XX'±1'	THIS DRAWING CONTAINS INFORMATION THAT IS PROPRIETARY TO TXGA INDUSTRIAL ELECTRONICS(S.Z)CO.,LTD AND SHOULD NOT BE USED WITHOUT WRITTEN PERMISSION		
	X.XXX±.004(0.10)	.XXX'±0.5'						